

The background of the slide is a photograph of various mushrooms scattered on a grey, textured surface. In the center, there is a large, pale yellow mushroom with a ruffled, fan-like cap. To its left, a small, white mushroom with a yellowish tip is visible. Above the central mushroom, there is a cluster of light-colored, porous mushrooms. Below the central one, a small orange mushroom is visible. To the right, there are some dark brown, cup-shaped mushrooms. The text is overlaid on a semi-transparent white rectangle in the upper half of the image.

From Fungal Morphology to Genotype

Mykologia terenowa

HAJNÓWKA 18-25.09.2021

Plan for today

- Covid safety rules
- Who we are? participants, groups, languages, important contacts etc.
- Venue
- Safety in Polish forests
- Program
- Evaluation rules

Covid safety rules



- Like elsewhere:
 - disinfect your hands
 - wear a mask indoor (shops, classrooms, public transportation etc.)
 - in hotels: you don't need to wear a mask in room but you should wear it in common shared spaces (eg. kitchen, corridors)
- In case of any symptoms, please contact Julia!

Who we are?

- 3 courses in one:
 - 4EU+ Alliance summer school *From Fungal Morphology to Genotype*
 - Mykologia terenowa
 - kurs klasyfikatora grzybów świeżych – Polish national certification
- we are ca. 40 people from 6 countries and 7 different universities
- we are speaking different languages and this is great 😊
 - general communication - English
 - if you don't understand something don't hesitate to ask in your native language

Groups

	group 1		group 2		group 3 mykologia terenowa	
1	Ondrej	Koukol	Meike	Piepenbring	Michał	Gorczak
2	Cathrin	Manz	Petr	Zehnálek	Julia	Pawłowska
3	Marek	Wołkowycki	Ewa	Zapora	Łukasz	Istel
4	Grzegorz	Ostrowski	Michał	Kochanowski	Beniamin	Abramczyk
5	Heda	Ghlimová	Katarzyna	Stojek	Dorota	Wiktorowicz
6	Kateřina	Glässnerová	Anna-Katharina	Krauß	Szymon	Ławicki
7	Tereza	Ježková	Miguel	Bermudez	Marcin	Mazurkiewicz
8	Daniela	Kolarczyková	Sarah Christin	Gronefeld	Witold	Mikołajuk
9	Barbara	Mallarino	Václav	Havlíček	Barbara	Płaskonka
10	Vendula	Sedláková	Štěpán	Pecka	Natalia	Sipa
11	Věra	Vtípilová	Peter	Kutsos	Katarzyna	Skłodowska
12	Yuliia	Leshchenko	Urszula	Waszczuk	Anna	Wiewiorowska
13	Anna	Biedunkiewicz	Maria Cecilia	Fasano	Anna	Dębska
14	Monika	Urbaniak			Krzysztof	Sawicki

in bold

teachers

in blue

participanta od KURS KLASYFIKATORA

- we are working in groups
- exceptions:
 - kurs klasyfikatora – need to follow lectures independently of group assignment
 - Wednesday – only participants of summer school are going to Białowieża Strict Reserve



Co-funded by the
Erasmus+ Programme
of the European Union



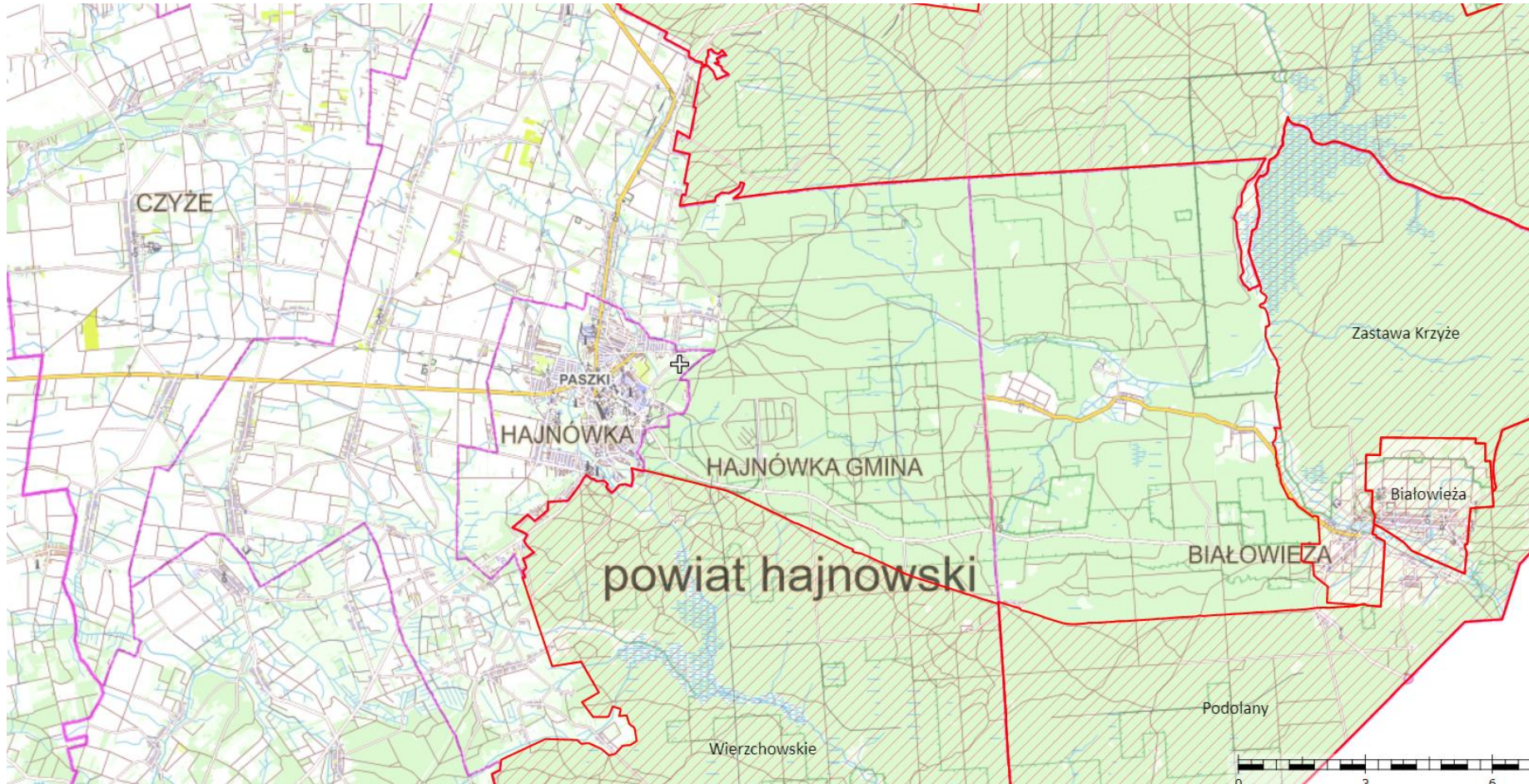
EUROPEAN
UNIVERSITY
ALLIANCE

Important contacts

<u>Organizing team (if you have question ask them:)):</u>		
Julia	Pawłowska	+48600327503
Ondrej	Koukol	+420777056364
Meike	Pippenbring	+491625703456
Alicja	Okraśińska	+48505963972
Igor	Siedlecki	+48517851678
Michał	Gorczak	+48608645034

- general emergency number for mobiles: **112**
- exchange contacts with each other
- switch phones to manual network selection as we will be close to Bielarus border
- **always have your ID !!!!**

Emergency state near Bielarus border



- always have your ID!
- Police or Border Guards may ask you for ID
- 1-day entrance permission for Wed 22

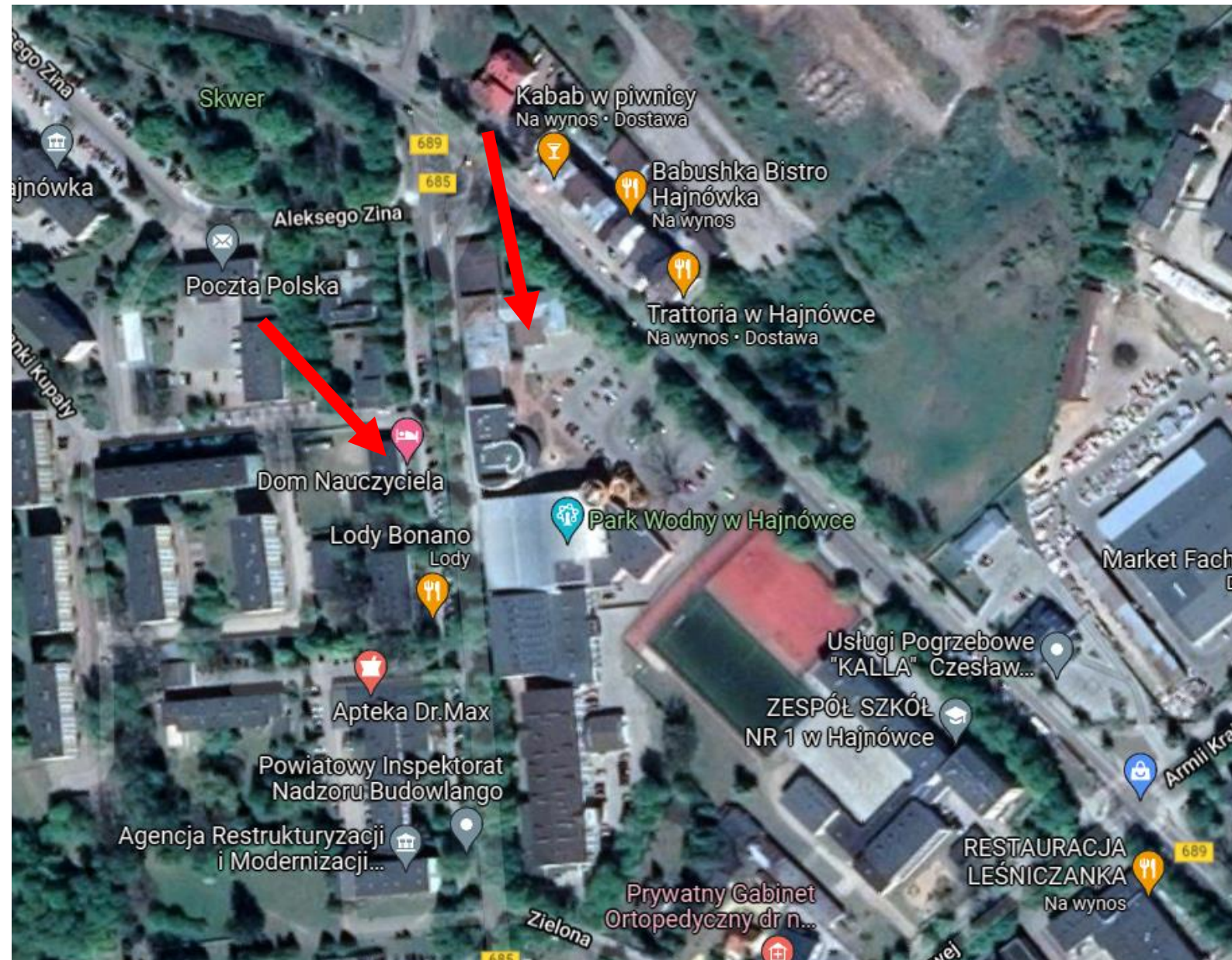


Co-funded by the
Erasmus+ Programme
of the European Union



EUROPEAN
UNIVERSITY
ALLIANCE

Venue



- Dom Nauczyciela,
ul. Piłsudskiego 6,
Hajnówka
- Instytut Nauk Leśnych,
ul. Piłsudskiego 1



Practical info

- organized lunches
- no kitchen
- we will try to buy sth for breakfasts and light dinners (klubik in DN)
- shops in Poland are closed on Sundays, other days open till ca 8-9 p.m.
- **If you have questions ask us!**

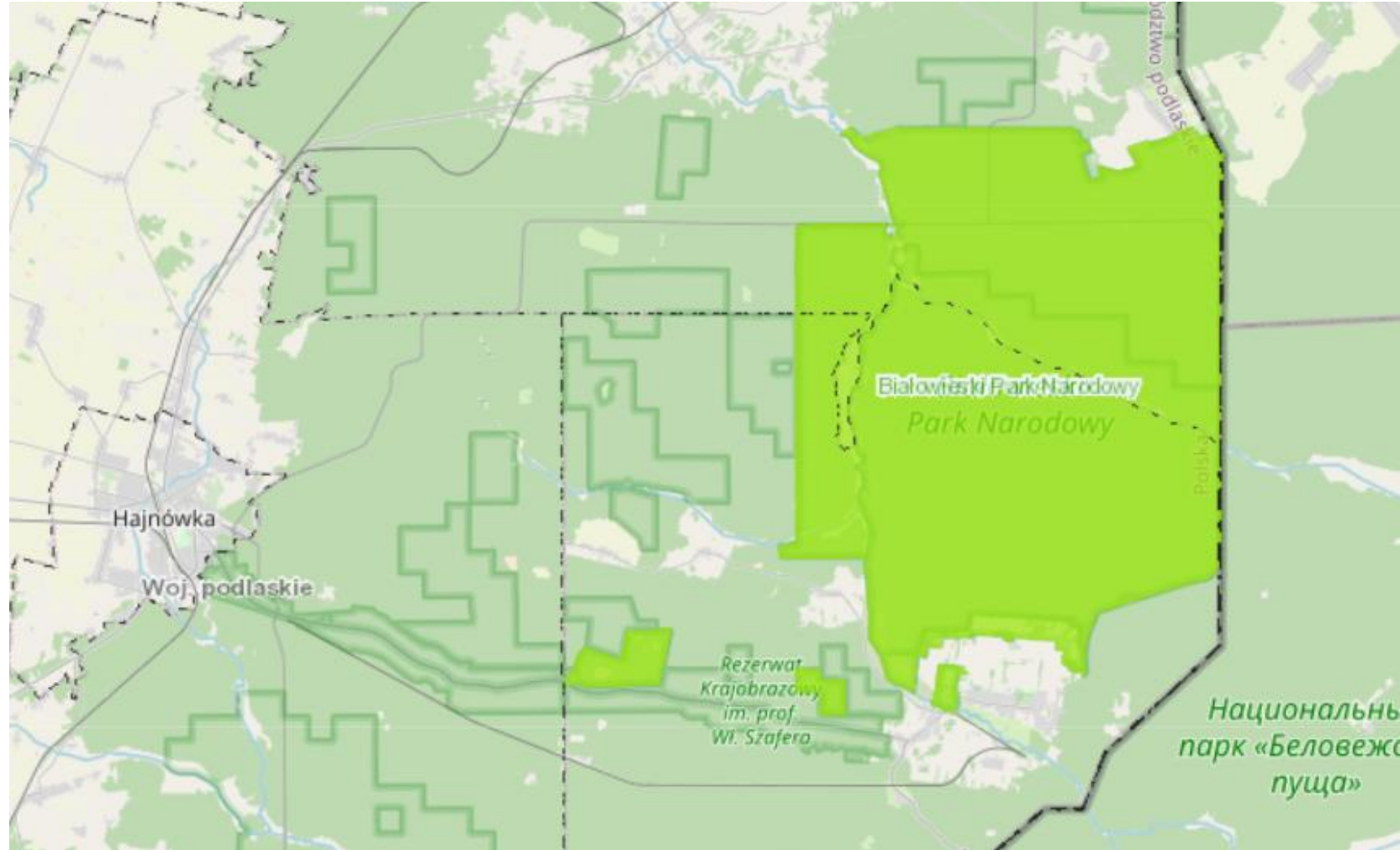
Safety in Polish forests

- Ticks that carry Lyme disease and which may cause tick-borne encephalitis are very common
 - **Use repellents!**
 - **Check yourself for ticks after coming from forest!**
- There is also a lot of mosquitos – use repellents too.
- **Białowieża Forest is really large!** and it is easy to get lost even if you are experienced!
 - **use locator apps (eg. LocusFree Map)!**
 - you can also use geoportal app (less intuitive, more detailed)
 - forests maps: <https://www.bdl.lasy.gov.pl/portal/mapy>
- Links to all apps are on webpage:
 - <https://ibe.biol.uw.edu.pl/dla-studentow/lista-zajec/mykologia-terenowa/> (in Polish)
 - program and groups will be also there

Białowieża Forest

- Lecture on Białowieża Forest will be planned for Monday evening
- Białowieża Primeval Forest:
 - Strict Reserve
 - Reserves
 - other forests

all valuable and old grown



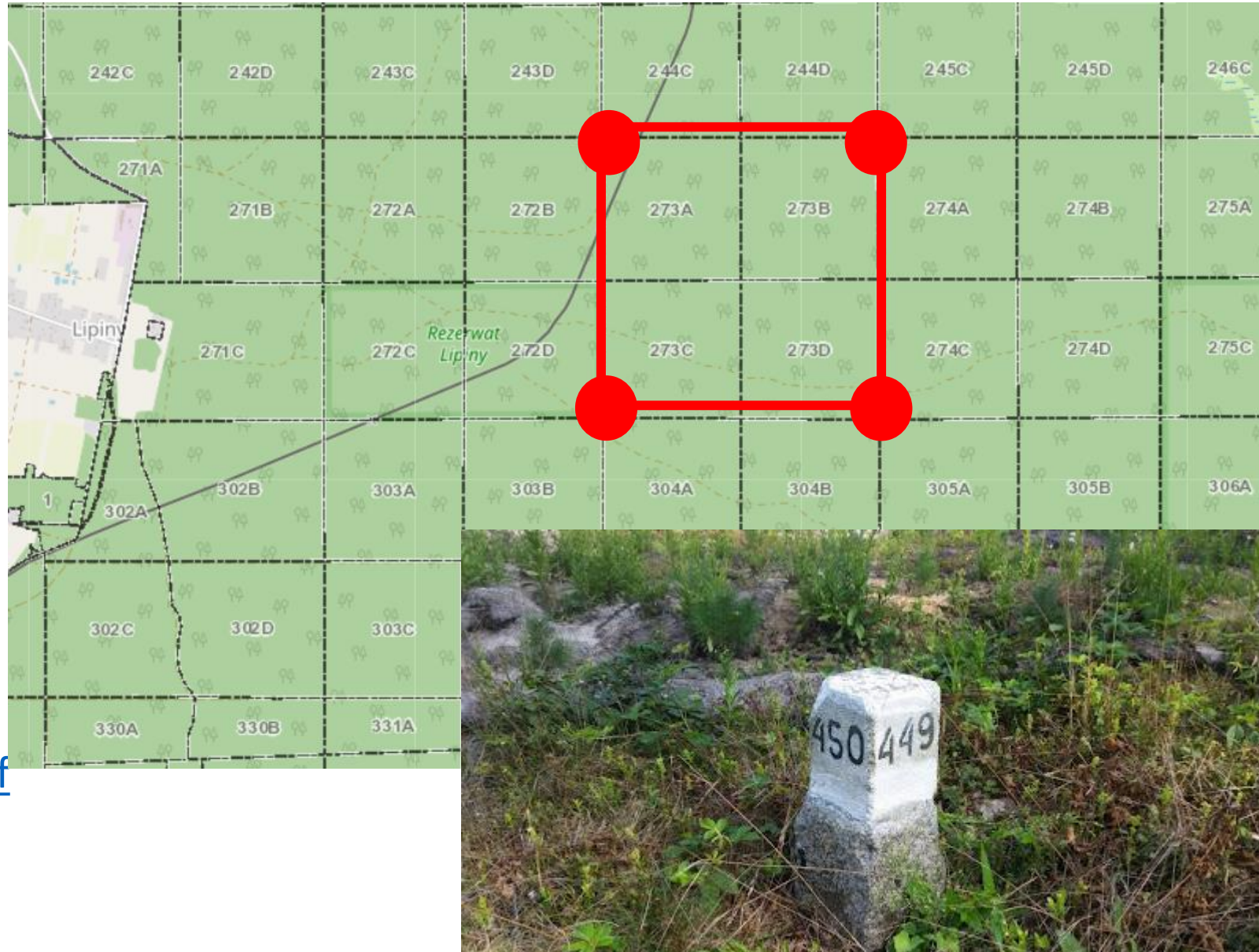
Co-funded by the
Erasmus+ Programme
of the European Union



EUROPEAN
UNIVERSITY
ALLIANCE

How to locate yourself in Polish Forest

- forest are divided into districts = numbered squares
- each large square is divided into 4 smaller called A,B,C,D
- the numbering system is unique for whole country
- in each corner there is numbered pilar indicating numbers of districts
- https://www.radiopik.pl/public/info/2018/2018-08-07_1533628891.jpg



Program

- will be printed and posted

day	hour	type of activity	group activity		
18.9.21 (Sat)	15.00	accommodation in Dom Studenta nr 1 UW (http://bss.uw.edu.pl/sekcja-socjalna/domy-studenta/ds1/ ; 9 x double room)			
	16.00	pizza			
	17.00	introductory lecture at Faculty of Biology (ul. Miecznikowa 1) - <i>Julia, Michał, Ondrej</i>			
	19.00	integration evening (free activity)			
19.9.21 (Sun)	08.30	departure to Hajnówka (bus from DS) - <i>Grzegorz</i>			
	12.00-16.00	field trip 1. in GROUPS (forest districts: 329C, E; 356A, B)			
	16.00-17.30	lunch in Baboushka (https://www.facebook.com/babushkabistro/)			
	18.00	accommodation in Dom Nauczyciela (DN) (http://disco-polo.nazwa.pl/strony/znpl/)			
	19.00-21.00	lecture: <i>Microparastici fungi</i> - <i>Meike</i> (lecture hall in DN)			
20.9.21 (Mon)	9.00-14.00	activity in groups	forest 1 by foot (Szafer Reserve: 386, 387, 388, 416)	forest 2 by car (Zwierzyniec: 391A,C,D; 418C, D; 419A)	microscopy 1 and molecular lab 1 (+ short trip)
	16.00	lunch "domowe obiady"			
	17.00-19.00	activity in groups	molecular lab 1	microscopy lab	forest 3 by car (Lipiny 272A)
	17.00-18.00			klasyfikator	
	19.30-21.00	lecture: <i>Białowieża Primeval Forest</i> - <i>Bogdan Jaroszewicz</i> (lecture hall in DN)			
21.9.21 (Tue)	9.00-14.00	activity in groups	microscopy 1 and molecular lab 2 (+ short trip)	forest 1 by foot (Szafer Reserve: 386, 387, 388, 416)	forest 2 by car (Zwierzyniec: 391A,C,D; 418C, D; 419A)
	15.00	lunch "domowe obiady"			
	16.00-18.00	activity in groups	forest 3 by car (Lipiny 272A)	microscopy lab	molecular lab 2
	19.00-20.00	activity in groups	additional lab time if needed	klasyfikator	additional lab time if needed



Co-funded by the
Erasmus+ Programme
of the European Union



EUROPEAN
UNIVERSITY
ALLIANCE

Program

22.9.21 (Wed)	8.00-17.00	activity in groups	excursion to Strict Reserve	forest 3 by car (Lipiny 272A)	excursion to Strict Reserve
	17.00	lunch "domowe obiady"			
	18.00-20.00	activity in groups	microscopy 2 (voluntary)	klasyfikator	microscopy 2 (voluntary)
	20.00-22.00	chillin			
23.9.21 (Thr)	9.00-14.00	activity in groups	individual sampling	forest 4 by car Budy (336A)	individual sampling
	15.00	lunch "domowe obiady"			
	16.00-18.00	data analysis workshop: data collection standard, GBIF, fungal identification & UNITE- Julia, Dmitry			
	19.00-21.00	lecture: data collection standard + GBIF - Dmitry (lecture hall DN)			
24.9.21 (Fri)	9.00-14.00	activity in groups	presentation preparation	egzamin "klasyfikator"; egzamin "mykologia terenowa"	presentation preparation
	15.00	lunch "domowe obiady"			
	16.00-18.00	activity in groups	presentation		presentation
	19.00-21.00	party			
25.9.21 (Sat)	8.00	departure to Warsaw			
	12.00	arrival to the WAW airport			



Co-funded by the
Erasmus+ Programme
of the European Union



EUROPEAN
UNIVERSITY
ALLIANCE

Evaluation rules

- Kurs klasyfikatora
 - will be explained on first lecture on Monday
- Mykologia terenowa
 - recognition of 100 macromycetes
 - you are preparing your own list
 - exam on Friday morning
- Summer School
 - project